

TM3 Tapping Machine

Impact Sound Insulation Measurement Source



Remote Control

The TM3 Tapping Machine is a precision impact noise source for building acoustic measurements. It is typically used for the assessment of general impacts in dwellings that occur on floors or stairs in a building. The Tapping Machine complies to the standards ISO 16283-2, ISO 717-2, ISO 10140-3/-4/-5, ISO 140-6/-7/-8, DIN 52210-6, ASTM E492 and ASTM E1007.

Key Features

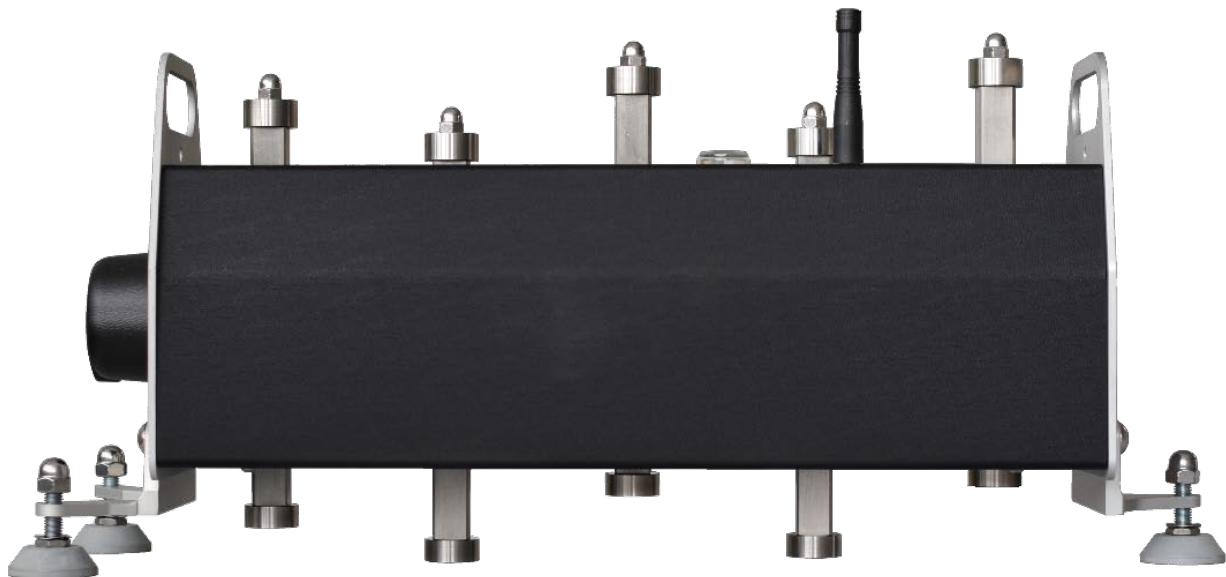
- High-precision source for impact sound transmission testing
- Robust design with sturdy feet
- Mains or battery powered (up to 2 hours autonomous operation)
- Reliable remote control
- Manual operation supported
- Type tested by PTB Germany in accordance to ISO 10140-5

Applications

Building acoustic measurements in compliance to ISO 16283-2, ISO 717-2, ISO 10140-3/-4/-5, ISO 140-6/-7/-8, DIN 52210-6, ASTM E492, ASTM E1007.

Specifications TM3

Standards	ISO 16283-2, ISO 717-2, ISO 10140-3/-4/-5, ISO 140-6/-7/-8 DIN 52210-6, ASTM E492, ASTM E1007
Power supply Input Output Consumption	100 to 240 VAC, 50/60 Hz, 1.0 A 18 VDC, 2.22 A 40 W max.
Battery Type Charge time Continuous operation	Lead-Acid gel (no maintenance required) approx. 8 hours up to 2 hours
Hammers Material Weight Diameter Distance between hammers Rated drop height	Stainless steel, hardened 500 g ± 6 g (1.1 lbs ± 0.212 oz) 30 mm ± 0.2 mm 100 mm (3.94") 40 mm (1.575")
Dimensions L x W x H	650 x 215 x 275 mm (25.6" x 8.5" x 10.8")
Weight (including battery)	10.2 kg (22.5 lbs)
Temperature, humidity Storage Operation	-20° to +70°C (-4° to 122°F) @ ≤ 90% RH (non-condensing) -10° to +50°C (14° to 158°F) @ ≤ 90% RH (non-condensing)
EMC conformity	EN 61326-1:2013 / CISPR11 / BS EN 55011:2009+A1:2010
Accessories (included)	<ul style="list-style-type: none"> • Carrying case • Battery charger • Drop height gauge • 17 mm wrench
Order information	<ul style="list-style-type: none"> • NTi Audio # 600 000 520 (with remote control 433 MHz) • NTi Audio # 600 000 528 (without remote control)



TM3 Tapping Machine (side view)

All informationen subject to change without prior notice.