



Sorama
make sound insightful

Sorama CAM iV64 Product sheet



Sorama CAM iV64

The Sorama CAM iV64 is a state-of-the-art acoustic camera, which enables you to show both highly accurate sound levels and localize where sound is coming from on the 7-inch touch display.

Specifically designed for users who want mobility and have instant acoustic information available to them, in order to perform in-field measurements with confidence.

Features include:

- Class 1 Performing SLM Functionalities
 - Realtime Spectrum
 - Realtime Spectrogram
 - Far Field Sound source localization and visualization
 - Sorama Portal compatible data for in-depth analysis
-



Sorama CAM iV64

Class 1 performing sound level meter and portable acoustic camera.

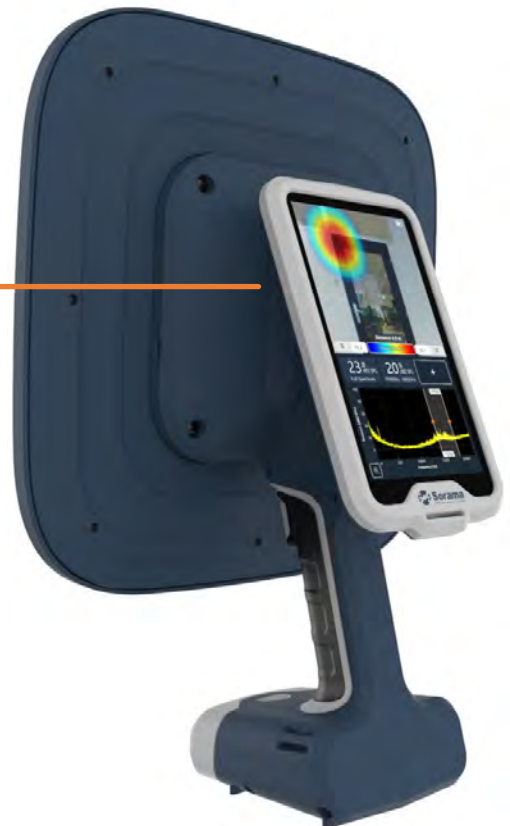
64 MEMS microphones in a sunflower pattern array.

Extremely fast GPU and CPU for instant processing power.

Portrait oriented 7-inch high-resolution touchscreen.

Intuitive touch user interface with a Sorama Portal look and feel.

A swappable smart battery allows for a full working day of operation.

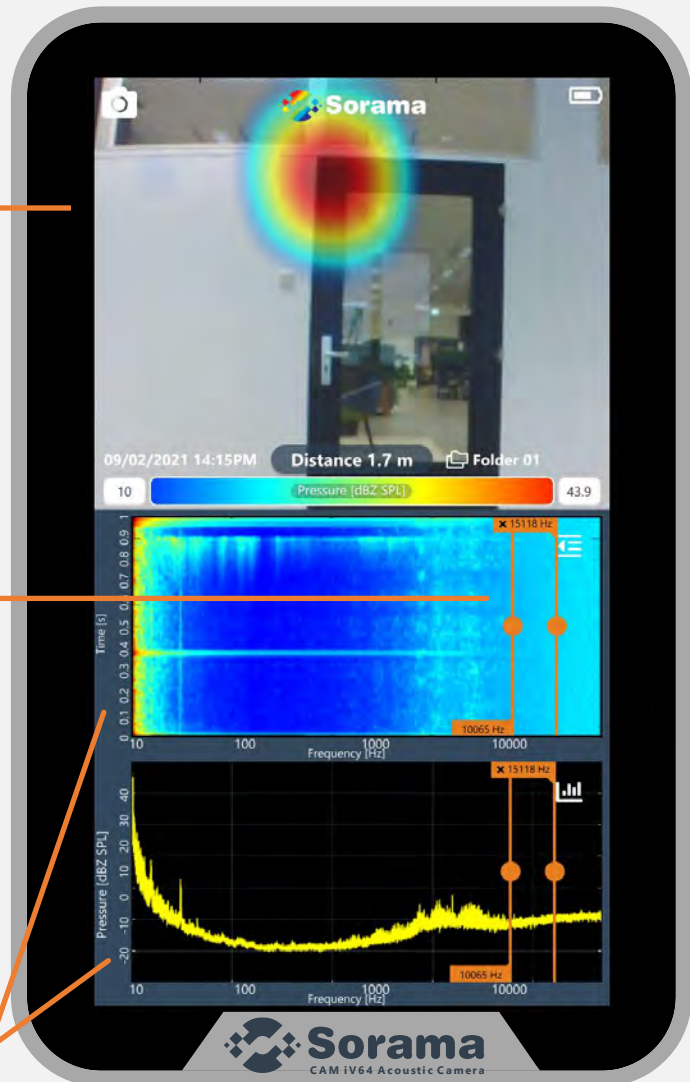


Sorama CAM iV64 User Interface

The portrait style user interface is designed to provide a smartphone like feel, that is both intuitive and can be tailored to your needs.

Easy frequency selection by selecting a custom frequency band on the touch display.

Spectrum and spectrogram can simultaneously be displayed in real time.



Sorama CAM iV64 User Interface – SLM Mode

The Sound Level Meter Mode is designed to provide easy selectable settings and accurate SPL information including visual acoustic data.

Full spectrum or frequency selected dB values can be displayed simultaneously in real-time and in various Frequency- & Time Weightings.

Besides showing only spectrum information you can also overlay the spectrum with octave bands in 1/1 & 1/3.



Physical Properties

Size	42 x 32 x 16 cm	L x W x D
Weight	2.32 kg	Including battery
Connectivity	USB-C	USB 3.0
Battery	Rechargeable & swappable smart battery	Battery life \pm 4 hours
Hardware connections	1/4" screw connection	Tripod mountable

Storage

Internal	Approx. 7Gb	Expandable via upgrading to SSD
External	Up to 2TB	Storage expandable with USB-C flash drive*
Storage formats	Sorama File Format containing a (video, audio and or image file)	Sorama data format compatible with Sorama Portal for data analysis

Display & Camera

Touch display	7-inch LCD capacitive touchscreen
Display resolution	720x1280
Camera resolution	1280x960

Microphones

Type	MEMS	Digital bottom port
SNR (A-weighted, at 1 kHz)	66 dB per channel	
Sensitivity	-37 \pm 1 dB FS	At 1 kHz, 94 dB SPL
Acoustic overload point	132.5 dB SPL	At 1 kHz, <10% THD

Measurement Features

Sampling rate	240 kHz	
Spectrum analysis	29 Hz – 27 kHz*	
Spectrogram analysis	0-10s+ 29 Hz – 27 kHz*	Streaming + recording
Beamforming (far-field)	500 Hz – 27 kHz*	Streaming + recording

*For custom requests above the 27kHz maximum frequency limit, please contact Sorama.

**Only compatible with memory sticks USB 3.1 Gen 2 or higher